



# GENDER PROJECTS AT LUND UNIVERSITY

*Gerd Carling*

*Online workshop: Diversity  
and evolution of gender, noun  
class and classifier systems*

*March 12, 2021, Lund  
University*

# GENDER PROJECTS AT LUND, AN OVERVIEW

## Completed (almost...)

1. Reconstructing the evolution of Indo-European grammar, including gender (Gerd Carling & Chundra Cathcart)
2. Gender assignment in Indo-European culture vocabulary (Gerd Carling et al)
3. PhD project: Gender assignment in North Germanic vocabulary (Briana Van Epps)

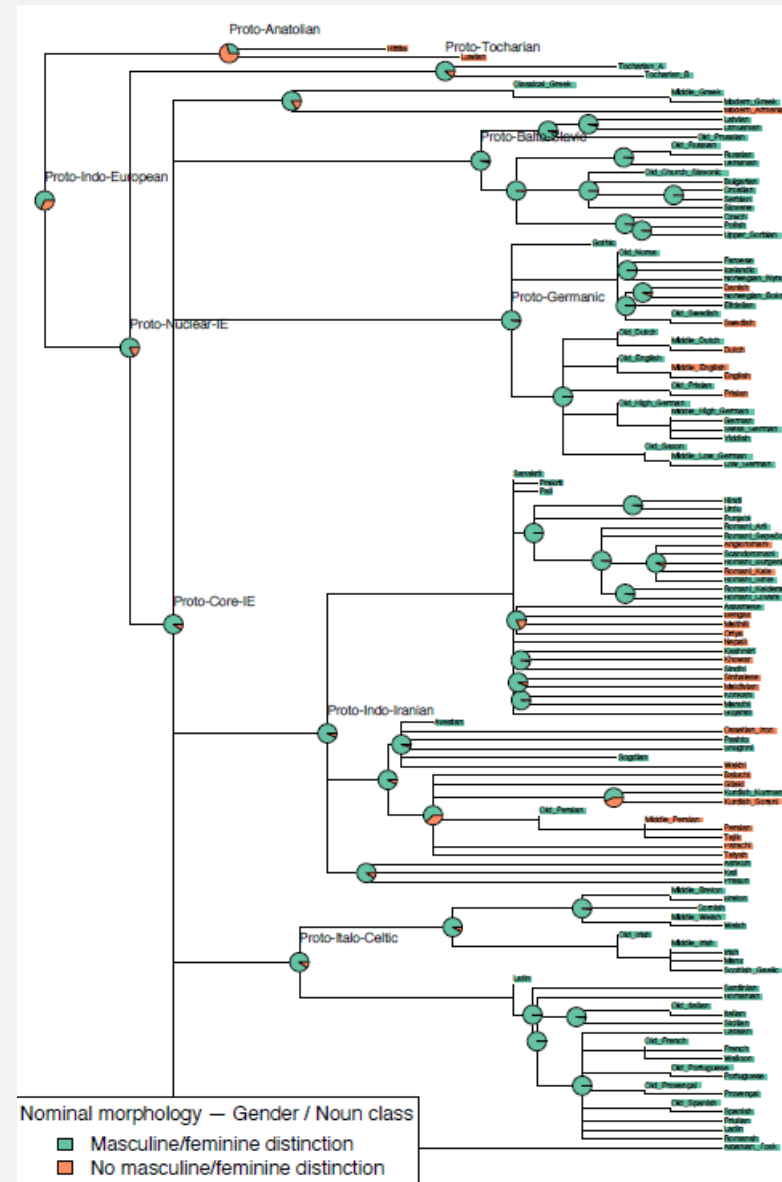
## Ongoing

1. Gender assignment in Indo-European basic vocabulary (Gerd Carling, Silvia Luraghi, Filip Larsson, Olof Lundgren, Linus Nilsson, and others)
2. Worldwide gender/noun class and classifier evolution (Marc Tang, Harald Hammarström, Olof Lundgren, Maja Robbers, Filip Larsson, William Zetterberg, Hilda Appelgren)
3. Gender in Nakh-Dagestanian languages (Kate Bellamy, Jesse Wichers Schreur & Gerd Carling)
4. Gender in Tocharian (Gerd Carling, and others)
5. PhD projects: classifiers in Baniwa (Sandra Cronhama) and gender affixation in Caucasian families (Filip Larsson)

# COMPLETED PROJECTS

# RECONSTRUCTING THE EVOLUTION OF INDO-EUROPEAN GENDER

- Comparative phylogenetic models
- Assumption that grammar variables change according to a stochastic process
- 65 categorical variables, of which 3 target gender (nominal gender only)
- Use of an Indo-Anatolian reference tree.
- Result for gender: higher probability of a three-gender system (masculine, feminine, neuter) of Proto-Indo-European
- Evolutionary dynamics: masculine/feminine: medium entry (0.3)/exit (0.2) rates, neuter: low entry (0.09) higher exit (0.3) rates.
- To appear (Language, September 2021)
- Gender only a minor part, which leaves many questions for gender – will be continued with focus on gender



Chundra Cathcart



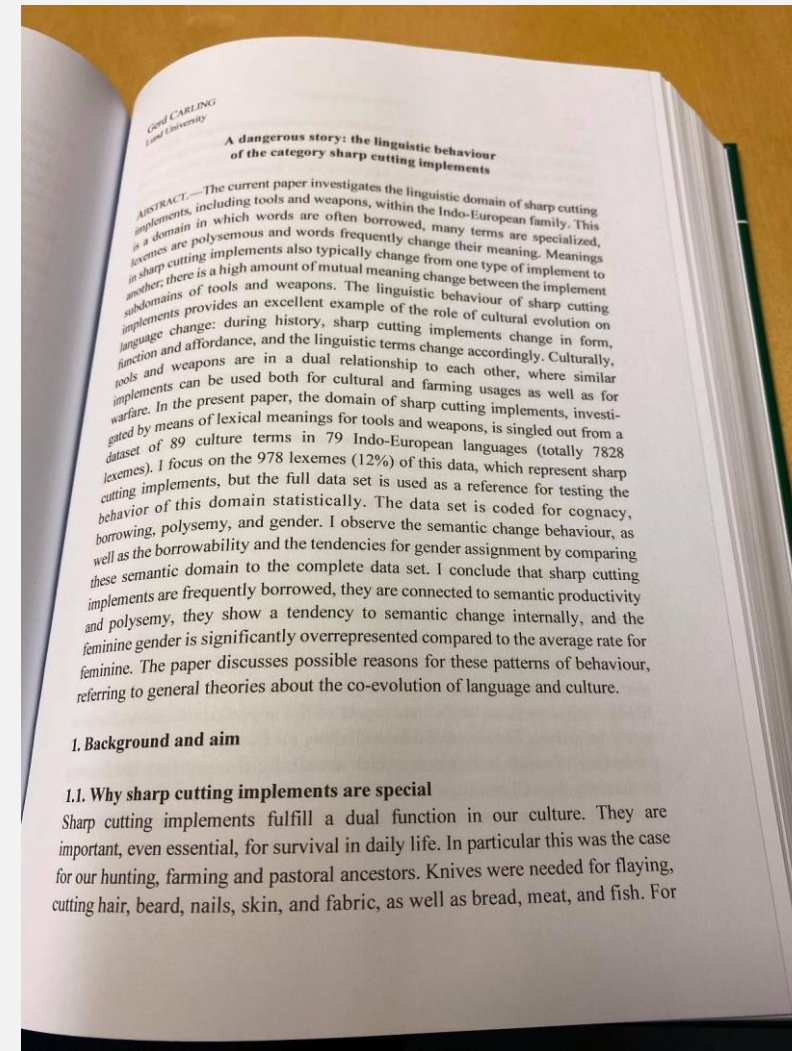
Gerd Carling

STIFTELSEN  
MARCUS OCH AMALIA  
WALLENBERGS  
MINNESFOND

# GENDER ASSIGNMENT IN CULTURE VOCABULARY

- Part of the project *Mouton Atlas of Languages and Cultures* (2019).
- 100-culture list, gender assignment tendencies for various concepts (Indo-European, 7500 lexemes).
- Not optimal for gender – the culture list was not aiming at gender assignment.

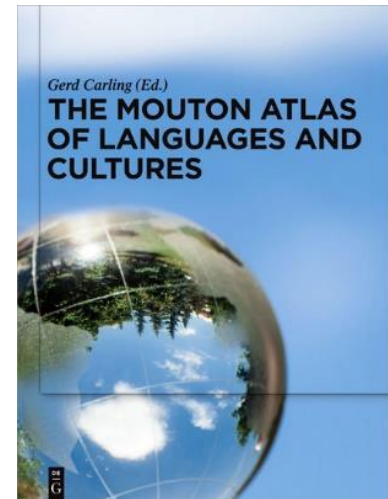
Classes	Borrowability	Instability	Cognacy	Gender (Indo-European)	Animacy
ACTIVITIES	Low	Medium	Medium	not applicable	n
CATTLE	Medium	High	High	M > F/N	y
CROPS	High	High	Medium	M > N > F	n
DOMESTIC ANIMALS	Low	Low	Medium	M > F > N	y
DOMESTIC INSECTS	Low	Medium	High	F > M > N	y
DRAFT ANIMALS	High	High	Medium	M > N/F	y
DRINK AND DRUGS	High	Medium	Low	M > N > F	n
GAME ANIMALS	Medium	Medium	High	M > F > N	y
IMPLEMENTS	High	High	High	F > M > N	n
MATERIALS	Low	High	Medium	N/F/M	n
METALS	Medium	Low	Medium	N > M > F	n
PIG RAISING	Low	Medium	High	M > F > N	y
POULTRY	Medium	High	Medium	M > F > N	y
PREDATOR ANIMALS	High	Low	Low	M > F > N	y
PREDATOR BIRDS	Low	High	Low	M > F > N	y
PRODUCTS	Low	Low	Low	M > F > N	n
SEASONS	Low	Medium	High	M > F > N	n
SMALL CATTLE	Low	Medium	High	M > F > N	y
TILLAGE	Low	High	High	M > F > N	n
TREES	Low	Low	High	F > M > N	n
WEAPONS	High	Low	Medium	F > M > N	n
VEGETABLES & FRUIT	Medium	Medium	Low	F > M > N	n
VEHICLES	High	High	Medium	M > F/N	n



## 1. Background and aim

### 1.1. Why sharp cutting implements are special

Sharp cutting implements fulfill a dual function in our culture. They are important, even essential, for survival in daily life. In particular this was the case for our hunting, farming and pastoral ancestors. Knives were needed for flaying, cutting hair, beard, nails, skin, and fabric, as well as bread, meat, and fish. For

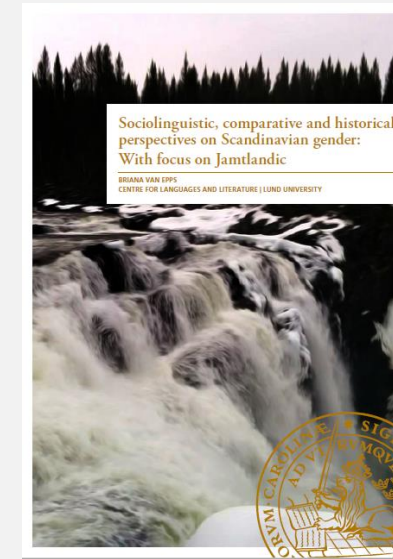


Carling, Gerd (2021) Special study on sharp implements in *Loanwords and Substrata*, IBS



# GENDER ASSIGNMENT IN GERMANIC

- PhD project "Sociolinguistic, comparative and historical aspects on Scandinavian gender: with focus on Jamtlandic".
- Completed in 2019.
- Final paper to appear in Journal of Germanic Linguistics, 2021.
- Comparative study on six North Scandinavian three-gender varieties.
- 1200 lexical concepts coded for cognacy, morphology, and gender.
- **Some results:**
  - Morphological assignment most important in Germanic
  - Phonological assignment weaken over time
  - Gender instability connected to lexical frequency
  - Weakening of feminine traceable already in Old Norse and continues into all three-gender varieties



Briana Van Epps



HUMANISTISKA  
OCH TEOLOGISKA  
FAKULTETERNA

# ONGOING PROJECTS

# GENDER ASSIGNMENT IN INDO-EUROPEAN BASIC VOCABULARY

(Gerd Carling, Filip Larsson, Olof Lundgren, Linus Nilsson, Silvia Luraghi, Sunny Pudygadu and others)

- Task: to feed/curate/code cognacy and gender for 200 basic vocabulary concepts in 150 Indo-European languages.
- Feeding/coding/checking directly into the open access database DiACL
- Coding not completed, only preliminary results (70 concepts, 90 languages)

Olof  
Lundgren



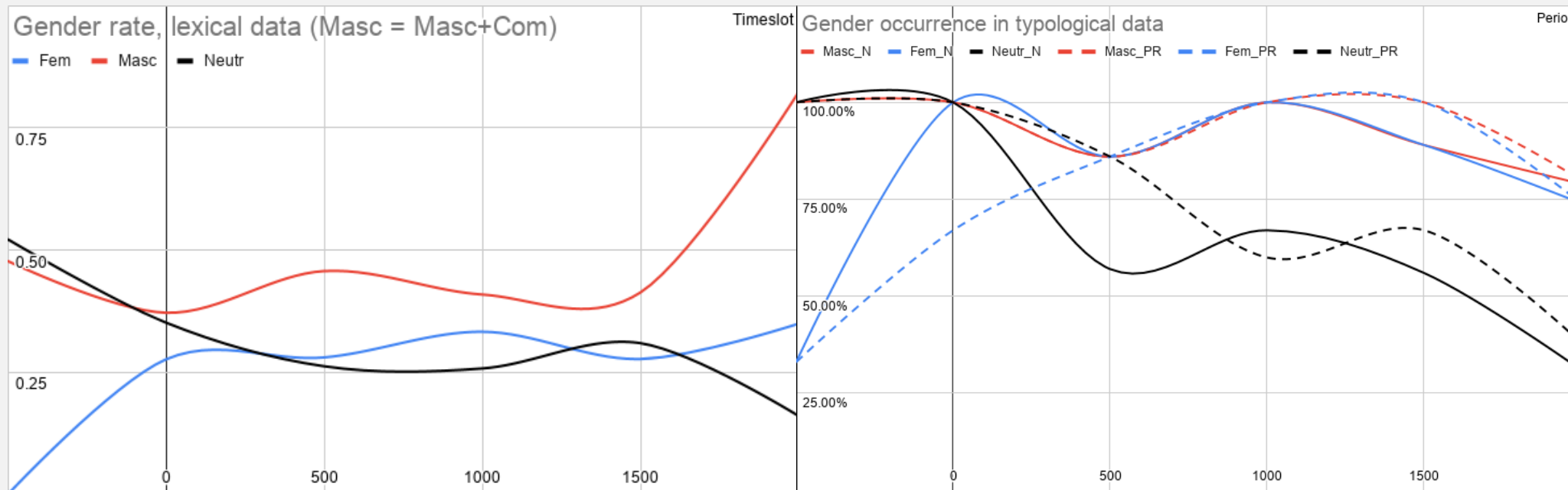
Filip  
Larsson



Linus  
Nilsson



Swedish  
Research  
Council



Distribution of lexical gender over time

Distribution of grammatical gender over time



# THE GENDER TOP LISTS (88 LGS, 5762 LEXEMES)

## *Feminine*

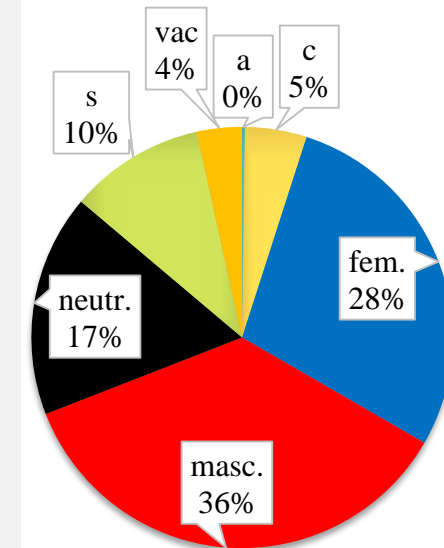
WOMAN
NIGHT
EARTH (SOIL, GROUND)
TONGUE (ANATOMICAL)
BARK (OF TREE)
SKIN (PERSON'S)
LOUSE (LICE)
HAND (NOT ARM)
ASH(ES)
STAR
FEATHER (NOT DOWN)
ROOT (BOTANICS)
SAND
FAT (ORGANIC SUBSTANCE)
BREAST
NOSE
ROAD/PATH
LIVER
MOON

## *Masculine*

MAN (ADULT MALE HUMAN)
DOG
SMOKE (N)
TOOTH (GENERAL)
PERSON (INDIVIDUAL HUMAN)
FINGERNAIL
FISH (N)
NECK
STONE
RAIN (N)
FIRE
BELLY (ABDOMEN, STOMACH)
HAIR (OF HEAD)
FOOT (NOT LEG)
TREE
MOON
ROAD/PATH
TAIL
SUN

## *Neuter*

EGG
MEAT/FLESH
LEAF (BOTANICS)
SEED (N)
NAME
KNEE
EYE
WATER (N)
HEART (ORGAN)
BONE
BLOOD (N)
HEAD (ANATOMIC)
TREE
FAT (ORGANIC SUBSTANCE)
HAIR (OF HEAD)
FEATHER (NOT DOWN)
MOUTH
MOUNTAIN
SKIN (PERSON'S)



# MANY QUESTIONS

*Syncronic, diachronic, and evolutionary*

## Assignment

- Are there any interesting tendencies of assignment principles related to semantic properties?
- Are there any interesting tendencies of variation and instability related to specific genders and/or specific semantic properties?
- Are there any connections between specific classes (e.g., body parts, kinship terms) and specific genders?

## Evolution

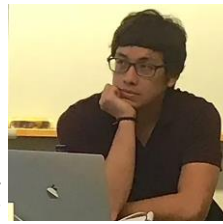
- What is/was the general evolutionary tendency in the family?
- Are there any general differences in the evolution of the lexicon in relation to grammar?
- Is there any difference in change rates of pronominal and nominal gender?

# WORLDWIDE DIVERSITY AND EVOLUTION OF NOUN CATEGORIZATION SYSTEMS

(*Marc Tang, Harald Hammarström, Olof Lundgren, Maja Robbers, Filip Larsson, William Zetterberg, Hilda Appelgren, Gerd Carling*)



Marc Tang



One-Soon  
Her



Harald  
Hammarström



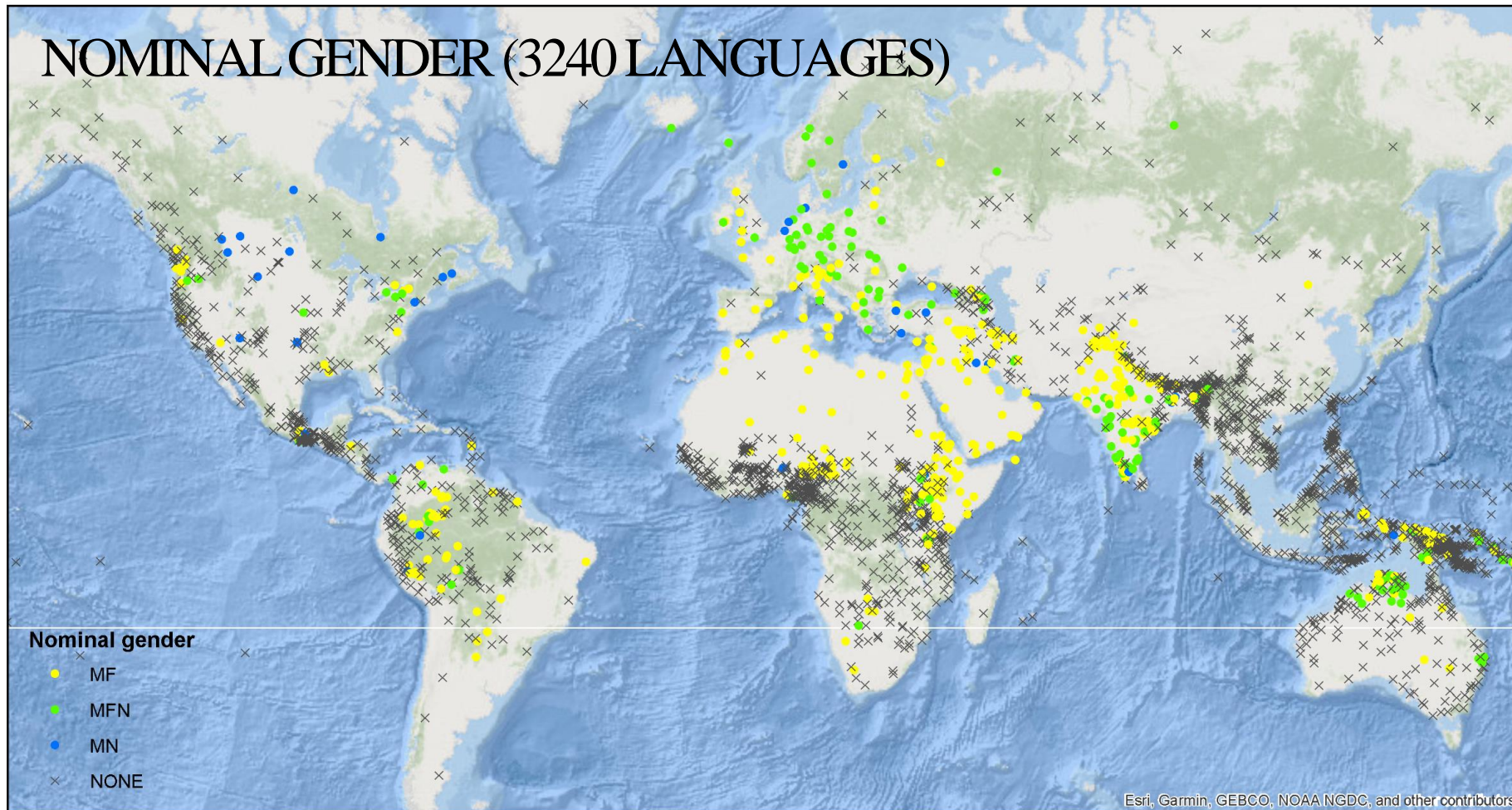
Olof  
Lundgren



Sandra  
Cronhamn



Filip Larsson





# GENDER IN NAKH-DAGESTANIAN LANGUAGES

*Jesse Wichers-Schreur, Kate Bellamy, Gerd Carling*



# GENDER IN TOCHARIAN

*Gerd Carling, Georges-Jean Pinault, Timothée Chamot-Rooke*

## CeDICT: A Comprehensive e-Dictionary of Tocharian

THE JOINT FACULTIES FOR HUMANITIES AND THEOLOGY

About Admin

[Start](#) > [Admin](#) > Overview

Editorial >

Overview

Search

Add

## Overview

Showing entries 1–100 of a total 3931 entries

[\[show all\]](#) [\[hide all\]](#)

Page 1 of 40 > >|

*-A- CHECKLIST*

[\[show\]](#) [\[icon\]](#) [\[icon\]](#) [\[icon\]](#)

*-aṃc*

[\[show\]](#) [\[icon\]](#) [\[icon\]](#) [\[icon\]](#)

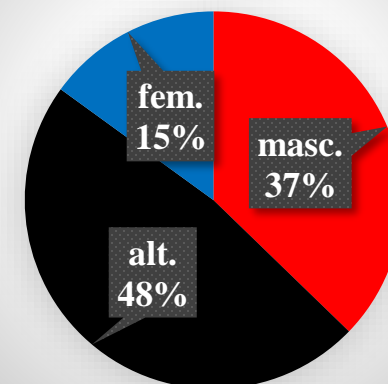
*-aṃcam*

[\[show\]](#) [\[icon\]](#) [\[icon\]](#) [\[icon\]](#)

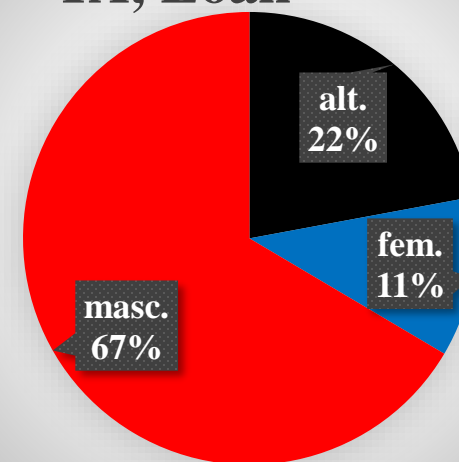
*aṃśär*

[\[show\]](#) [\[icon\]](#) [\[icon\]](#) [\[icon\]](#)

## TA, No loan



## TA, Loan



Swedish  
Research  
Council

Gerd Carling  
Lund University

# PHD AND POSTDOC PROJECTS

## Sandra Cronhamn

Nominal Classification in  
Baniwa

(PhD, Lund, 2018-2022)



## Filip Larsson

Nominal and verbal affixation  
in the Caucasus

(PhD, Lund, 2019-2023)



## Niklas Erben Johansson

(International postdoc  
Lund/Prague, 2021-2023)

- Will investigate form-meaning mapping in noun categorization morphemes from hundreds of language families



HUMANISTISKA  
OCH TEOLOGISKA  
FAKULTETERNA



HUMANISTISKA  
OCH TEOLOGISKA  
FAKULTETERNA



Swedish  
Research  
Council



# RESOURCES

- Lund University: Database DiACL (SWE-CLARIN)
- Typological and lexical data open access (but work in progress!)
- Note: the world-wide gender/noun class/ classifier data is not in the database/open access



The screenshot shows the DiACL website homepage. At the top is a header with logos for De Gruyter Mouton, Swedish Research Council, SWE-CLARIN, Lund University, and Crafoordska stiftelsen. Below the header is a navigation bar with links: DiACL, Project, Languages, Typology, Lexicology, Sources, Search, Register, and Log in. The main content area has a large heading "Welcome to DiACL!" followed by a paragraph describing the database. To the right, there is a book cover for "THE MOUTON ATLAS OF LANGUAGES AND CULTURES" and a world map with a legend. Below the map is a section for tweets from @DiachronicAtlas.

**DiACL**  
Diachronic Atlas of Comparative Linguistics

DE GRUYTER MOUTON  
Swedish Research Council  
SWE-CLARIN  
LUND UNIVERSITY  
Crafoordska stiftelsen  
STIFTELSEN MARCUS OCH AMALIA WALLENBERGS MINNESFOND

DiACL Project Languages Typology Lexicology Sources Search Register Log in

## Welcome to DiACL!

DiACL is an open access database with lexical and typological/morphosyntactic data for historical, comparative and phylogenetic linguistics. It contains data from 500 languages of 18 families, divided into three macro-areas: Eurasia, Pacific, and the Amazon.

- Database – General description (PDF)
- Data description – Typology Eurasia (PDF)
- Data description – Typology Austronesia (PDF)
- Data description – Lexicology (PDF)

[Learn more »](#)

Visit the [Lund Language Typology and Evolution research group](#), for publications, news and guidelines to using data.

*Gerd Carling (Ed.)*  
**THE MOUTON ATLAS OF LANGUAGES AND CULTURES**

Language family legend:  
Afroasiatic  
Algonquian  
Austronesian  
Bantu  
Celtic  
Dravidian  
Germanic  
Indo-European  
Japanese  
Koreanic  
Malay-Indonesian  
Mongolic  
Nilo-Saharan  
Papuan  
Sino-Tibetan  
Slavic  
Turkic  
Uralic  
Viet-Muong  
Yukon-Congian

Tweets by @DiachronicAtlas

**DiACL**  
@DiachronicAtlas  
New article "A dangerous story: the linguistic behaviour of the category sharp cutting implements", in *Loanwords and Substrata* (IBS, ed. Romain Garnier)





*Thanks for your attention!*  
*[gerd.carling@ling.lu.se](mailto:gerd.carling@ling.lu.se)*

# ACKNOWLEDGEMENTS AND FUNDING

**Acknowledgements/contributions** (for a complete list of data contributors see <https://diac1.ht.lu.se/>): Marc Tang, Sunny Pydugadu, Silvia Luraghi, Chundra Cathcart, Harald Hammarström, Briana Van Epps, Johan Frid, Filip Larsson, Olof Lundgren, Linus Nilsson, Niklas Erben Johansson, Sandra Cronhamn, One-Soon Her.

**Language typology and evolution research group:** <https://projekt.ht.lu.se/typology/>

**Infrastructure/Lab:** DiACL: <https://diac1.ht.lu.se/>, Twitter: @DiachronicAtlas, Facebook: <https://www.facebook.com/DiachronicAtlas/>

@CarlingGerd, [www.gerdcarling.se](http://www.gerdcarling.se), <http://www.sol.lu.se/person/GerdCarling>

**Project CHRONOS:** <http://projekt.ht.lu.se/chronos/>

**Project GENDER:** <https://projekt.ht.lu.se/linguisticgender/>

**Funding, research and data:** Marcus and Amalia Wallenberg Foundation (2013-2015, 2018-2021), Swedish Research Council (2020-2022), Åke Wiberg Foundation (2020), Crafoord Foundation (2012, 2017)

**Funding, infrastructure:** SWE-CLARIN, Swedish Research Council.

**Support: infrastructure and technology**

Lund University: Faculty of Humanities and Theology, IT, Lund Humanities Lab, Lund University GIS Centre, SWE-CLARIN.

STIFTELSEN  
MARCUS OCH AMALIA  
WALLENBERGS  
MINNESFOND



Swedish  
Research  
Council



LUNDS  
UNIVERSITET

HUMANISTISKA  
OCH TEOLOGISKA  
FAKULTETERNA

Crafoordska stiftelsen  
GRUNDAD AV HOLGER CRAFOORD 1910



ÅKE WIBERGS STIFTELSE



SWE-CLARIN

Gerd Carling  
Lund University